

**Family First Prevention Services Act (FFPSA)
Bubble Chart Data Packet
Supplemental Tables**

Table 1. Number of unique children with movements into CC program in 2019 and their movement types.

	# Movements	# Unique Children	Movement Types*									
			New Admission(s) Only		Step Up(s) Only		Lateral Transfer(s) Only		Return(s) from Absence / TD Only		Two or More Movement Types	
			N	%	N	%	N	%	N	%	N	%
Total	4,674	3,410	1,331	39%	445	13%	832	24%	249	7%	553	16%
New York City	1,978	1,405	533	38%	94	7%	403	29%	195	14%	180	13%
Rest of State	2,696	2,005	798	40%	351	18%	429	21%	54	3%	373	19%
Buffalo Region	480	372	167	45%	65	17%	64	17%	13	3%	63	17%
Rochester Region	227	181	59	33%	40	22%	45	25%	2	1%	35	19%
Syracuse Region	541	412	159	39%	73	18%	90	22%	6	1%	84	20%
Albany Region	466	360	137	38%	75	21%	81	23%	10	3%	57	16%
Westchester region	982	680	276	41%	98	14%	149	22%	23	3%	134	20%

*Percentage is calculated based on # unique children.

Prepared by OCFS Bureau of Research, Evaluation, and Performance Analytics; Data extracted from CONNECTIONS on 3/3/2021

Supplemental Table 1. New Admissions into Congregate Care in 2019 by Status at 1 Year Post CC Entry--Albany Region

	Remained in CC Program		Discharged from Custody		Stepped Down to Lower Level of Care		Transferred to Another CC Facility/Program		Total	
	#	%	#	%	#	%	#	%	#	%
Total	60	34%	60	34%	36	20%	20	11%	176	100%
Demographics										
Gender										
Female	22	37%	36	60%	17	47%	8	40%	83	47%
Male	38	63%	24	40%	19	53%	12	60%	93	53%
Race/Ethnicity										
White/Caucasian	32	53%	39	65%	18	50%	13	65%	102	58%
Black/African American	15	25%	10	17%	11	31%	6	30%	42	24%
Hispanic/Latino	8	13%	6	10%	3	8%	1	5%	18	10%
Other	0	0%	0	0%	0	0%	0	0%	0	0%
Unknown	5	8%	5	8%	4	11%	0	0%	14	8%
Age at Entry into CC										
< 2	0	0%	0	0%	0	0%	0	0%	0	0%
2 - 5	0	0%	0	0%	0	0%	3	15%	3	2%
6 - 9	6	10%	3	5%	1	3%	3	15%	13	7%
10 - 12	7	12%	6	10%	5	14%	3	15%	21	12%
13	5	8%	2	3%	5	14%	1	5%	13	7%
14	8	13%	16	27%	4	11%	2	10%	30	17%
15	12	20%	13	22%	4	11%	4	20%	33	19%
16	19	32%	14	23%	15	42%	3	15%	51	29%
17+	3	5%	6	10%	2	6%	1	5%	12	7%
Current Movement into CC										
Facility upon Entry into CC										
Institution	46	77%	37	62%	27	75%	16	80%	126	72%
Group Residence	4	7%	6	10%	4	11%	1	5%	15	9%
Group Home	9	15%	11	18%	4	11%	3	15%	27	15%
AOBH	1	2%	6	10%	1	3%	0	0%	8	5%
Case Type										
CW	28	47%	24	40%	14	39%	12	60%	78	44%
JD	14	23%	19	32%	11	31%	6	30%	50	28%
PINS	18	30%	17	28%	11	31%	2	10%	48	27%
Previous History										
Any Prior FC Placement (Lifetime)										
No	44	73%	41	68%	22	61%	13	65%	120	68%
Yes	16	27%	19	32%	14	39%	7	35%	56	32%
Any Prior CC experience (Lifetime)										
No	52	87%	46	77%	27	75%	16	80%	141	80%
Yes	8	13%	14	23%	9	25%	4	20%	35	20%
Outcome										
Time To Exit / Transfer in 12-Month Followup¹										
Exited within 30 Days	N/A	N/A	16	27%	3	8%	0	0%	19	16%
Exited between 30 and 60 Days	N/A	N/A	10	17%	3	8%	0	0%	13	11%
Exited between 61 and 365 Days	N/A	N/A	34	57%	30	83%	20	100%	84	72%
Exit Type										
Discharged from Custody										
Discharged to Permanency (Return to Parent, Relative, Adoption)	N/A	N/A	54	90%	N/A	N/A	N/A	N/A	N/A	N/A
Discharged to Adult Corrections/OCFS/Other JD Placement	N/A	N/A	4	7%	N/A	N/A	N/A	N/A	N/A	N/A
Other (e.g., Adulthood obtained, AWOL, Entered OMH Facility, etc.)	N/A	N/A	2	3%	N/A	N/A	N/A	N/A	N/A	N/A
Stepped down into lower level of care										
Certified Foster Home	N/A	N/A	N/A	N/A	2	6%	N/A	N/A	N/A	N/A
Approved Relative Foster Home	N/A	N/A	N/A	N/A	2	6%	N/A	N/A	N/A	N/A
Foster/Adoptive Home	N/A	N/A	N/A	N/A	4	11%	N/A	N/A	N/A	N/A
Missing Facility Information	N/A	N/A	N/A	N/A	0	0%	N/A	N/A	N/A	N/A
Trial Discharge	N/A	N/A	N/A	N/A	28	78%	N/A	N/A	N/A	N/A
Transferred to another CC facility / program										
Institution	N/A	N/A	N/A	N/A	N/A	N/A	6	30%	N/A	N/A
Group Residence	N/A	N/A	N/A	N/A	N/A	N/A	1	5%	N/A	N/A
Group Home	N/A	N/A	N/A	N/A	N/A	N/A	3	15%	N/A	N/A
AOBH	N/A	N/A	N/A	N/A	N/A	N/A	8	40%	N/A	N/A
Others ²	N/A	N/A	N/A	N/A	N/A	N/A	2	10%	N/A	N/A

Notes:

1. Percentage in the "Total" columns is calculated based on total number of exit/transfer, excluding children remained in CC facility/program.

2. Other may include: ACS' Children Center, Non-secure/Secure Detention Center, Psychiatric Center, Residential Treatment Facility, and Runaway Shelter.

Prepared by OCFS Bureau of Research, Evaluation, and Performance Analytics; Data extracted from CONNECTIONS on 3/3/2021

Supplemental Table 2. Step-Ups into Congregate Care in 2019 by Status at 1 Year Post CC Entry--Albany Region

	Remained in CC Program		Discharged from Custody		Stepped Down to Lower Level of Care		Transferred to Another CC Facility/Program		Total	
	#	%	#	%	#	%	#	%	#	%
Total	42	46%	8	9%	34	37%	7	8%	91	100%
Demographics										
Gender										
Female	19	45%	3	38%	15	44%	3	43%	40	44%
Male	23	55%	5	63%	19	56%	4	57%	51	56%
Race/Ethnicity										
White/Caucasian	26	62%	5	63%	20	59%	3	43%	54	59%
Black/African American	5	12%	2	25%	7	21%	2	29%	16	18%
Hispanic/Latino	4	10%	0	0%	2	6%	1	14%	7	8%
Other	2	5%	0	0%	3	9%	0	0%	5	5%
Unknown	5	12%	1	13%	2	6%	1	14%	9	10%
Age at Entry into CC										
< 2	0	0%	0	0%	1	3%	0	0%	1	1%
2 - 5	0	0%	0	0%	5	15%	1	14%	6	7%
6 - 9	6	14%	1	13%	2	6%	0	0%	9	10%
10 - 12	12	29%	2	25%	1	3%	3	43%	18	20%
13	3	7%	0	0%	3	9%	0	0%	6	7%
14	4	10%	0	0%	5	15%	0	0%	9	10%
15	6	14%	1	13%	7	21%	1	14%	15	16%
16	8	19%	1	13%	7	21%	1	14%	17	19%
17+	3	7%	3	38%	3	9%	1	14%	10	11%
Current Movement into CC										
Facility upon Entry into CC										
Institution	25	60%	3	38%	24	71%	3	43%	55	60%
Group Residence	6	14%	2	25%	4	12%	1	14%	13	14%
Group Home	9	21%	3	38%	5	15%	3	43%	20	22%
AOBH	2	5%	0	0%	1	3%	0	0%	3	3%
Case Type										
CW	38	90%	6	75%	29	85%	6	86%	79	87%
JD	2	5%	0	0%	0	0%	1	14%	3	3%
PINS	2	5%	2	25%	5	15%	0	0%	9	10%
Previous History										
Any Prior FC Placement (Lifetime)										
No	27	64%	6	75%	24	71%	2	29%	59	65%
Yes	15	36%	2	25%	10	29%	5	71%	32	35%
Any Prior CC experience (Lifetime)										
No	24	57%	5	63%	25	74%	4	57%	58	64%
Yes	18	43%	3	38%	9	26%	3	43%	33	36%
Facility Prior to Movement into Current CC										
Certified Foster Home	13	31%	2	25%	6	18%	2	29%	23	25%
Approved Relative Foster Home	3	7%	0	0%	3	9%	0	0%	6	7%
Foster/Adoptive Home	26	62%	6	75%	25	74%	5	71%	62	68%
Adoption Subsidy Home	0	0%	0	0%	0	0%	0	0%	0	0%
Unknown	0	0%	0	0%	0	0%	0	0%	0	0%
Length of Time in Foster Care										
< 1 Month	5	12%	1	13%	10	29%	1	14%	17	19%
1-3 Months	5	12%	3	38%	7	21%	1	14%	16	18%
4-6 Months	6	14%	0	0%	2	6%	0	0%	8	9%
7-9 Months	2	5%	0	0%	2	6%	0	0%	4	4%
10-12 Months	5	12%	0	0%	2	6%	2	29%	9	10%
13-15 Months	1	2%	0	0%	1	3%	1	14%	3	3%
16-18 Months	1	2%	0	0%	0	0%	0	0%	1	1%
19-21 Months	0	0%	0	0%	2	6%	0	0%	2	2%
22-24 Months	0	0%	0	0%	2	6%	0	0%	2	2%
25+ Months	17	40%	4	50%	6	18%	2	29%	29	32%
Length of Time in Previous Facility										
< 1 Month	12	29%	5	63%	18	53%	4	57%	39	43%
1-3 Months	13	31%	2	25%	9	26%	1	14%	25	27%
4-6 Months	6	14%	0	0%	2	6%	0	0%	8	9%
7-9 Months	6	14%	1	13%	2	6%	0	0%	9	10%
10-12 Months	1	2%	0	0%	1	3%	1	14%	3	3%
13-15 Months	2	5%	0	0%	1	3%	0	0%	3	3%
16-18 Months	0	0%	0	0%	0	0%	0	0%	0	0%
19-21 Months	0	0%	0	0%	1	3%	1	14%	2	2%
22-24 Months	0	0%	0	0%	0	0%	0	0%	0	0%
25+ Months	2	5%	0	0%	0	0%	0	0%	2	2%
Outcome										
Time To Exit / Transfer in 12-Month Followup¹										
Exited within 30 Days	N/A	N/A	0	0%	2	6%	1	14%	3	6%
Exited between 30 and 60 Days	N/A	N/A	1	13%	5	15%	1	14%	7	14%
Exited between 61 and 365 Days	N/A	N/A	7	88%	27	79%	5	71%	39	80%
Exit Type										
Discharged from Custody										
Discharged to Permanency (Return to Parent, Relative, Adoption)	N/A	N/A	5	63%	N/A	N/A	N/A	N/A	N/A	N/A
Discharged to Adult Corrections/OCFS/Other JD Placement	N/A	N/A	0	0%	N/A	N/A	N/A	N/A	N/A	N/A
Other (e.g., Adulthood obtained, AWOL, Entered OMH Facility, etc.)	N/A	N/A	3	38%	N/A	N/A	N/A	N/A	N/A	N/A
Stepped down into lower level of care										
Certified Foster Home	N/A	N/A	N/A	N/A	2	6%	N/A	N/A	N/A	N/A
Approved Relative Foster Home	N/A	N/A	N/A	N/A	2	6%	N/A	N/A	N/A	N/A
Foster/Adoptive Home	N/A	N/A	N/A	N/A	18	53%	N/A	N/A	N/A	N/A
Missing Facility Information	N/A	N/A	N/A	N/A	0	0%	N/A	N/A	N/A	N/A
Trial Discharge	N/A	N/A	N/A	N/A	12	35%	N/A	N/A	N/A	N/A
Transferred to another CC facility / program										
Institution	N/A	N/A	N/A	N/A	N/A	N/A	1	14%	N/A	N/A
Group Residence	N/A	N/A	N/A	N/A	N/A	N/A	0	0%	N/A	N/A
Group Home	N/A	N/A	N/A	N/A	N/A	N/A	4	57%	N/A	N/A
AOBH	N/A	N/A	N/A	N/A	N/A	N/A	1	14%	N/A	N/A
Others ²	N/A	N/A	N/A	N/A	N/A	N/A	1	14%	N/A	N/A

Notes:
 1. Percentage in the "Total" columns is calculated based on total number of exit/transfer, excluding children remained in CC facility/program.
 2. Other may include: ACS' Children Center, Non-secure/Secure Detention Center, Psychiatric Center, Residential Treatment Facility, and Runaway Shelter.
 Prepared by OCFS Bureau of Research, Evaluation, and Performance Analytics; Data extracted from CONNECTIONS on 3/3/2021

Supplemental Table 3. Lateral Movements into Congregate Care in 2019 by Status at 1 Year Post CC Entry--Albany Region

	Remained in CC Program		Discharged from Custody		Stepped Down to Lower Level of Care		Transferred to Another CC Facility/Program		Total	
	#	%	#	%	#	%	#	%	#	%
Total	78	47%	27	16%	34	21%	26	16%	165	100%
Demographics										
Gender										
Female	33	42%	10	37%	14	41%	13	50%	70	42%
Male	45	58%	17	63%	20	59%	13	50%	95	58%
Race/Ethnicity										
White/Caucasian	43	55%	15	56%	17	50%	14	54%	89	54%
Black/African American	19	24%	7	26%	10	29%	6	23%	42	25%
Hispanic/Latino	8	10%	4	15%	4	12%	3	12%	19	12%
Other	0	0%	0	0%	0	0%	0	0%	0	0%
Unknown	8	10%	1	4%	3	9%	3	12%	15	9%
Age at Lateral Transfer										
< 2	0	0%	0	0%	0	0%	0	0%	0	0%
2 - 5	0	0%	0	0%	0	0%	0	0%	0	0%
6 - 9	3	4%	3	11%	1	3%	3	12%	10	6%
10 - 12	13	17%	1	4%	3	9%	4	15%	21	13%
13	9	12%	1	4%	4	12%	2	8%	16	10%
14	13	17%	4	15%	4	12%	4	15%	25	15%
15	8	10%	3	11%	4	12%	2	8%	17	10%
16	13	17%	7	26%	6	18%	3	12%	29	18%
17+	19	24%	8	30%	12	35%	8	31%	47	28%
Current Movement into CC										
Facility upon Entry into CC										
Institution	46	59%	11	41%	20	59%	10	38%	87	53%
Group Residence	3	4%	1	4%	1	3%	4	15%	9	5%
Group Home	23	29%	12	44%	11	32%	11	42%	57	35%
AOBH	6	8%	3	11%	2	6%	1	4%	12	7%
Case Type										
CW	61	78%	16	59%	23	68%	22	85%	122	74%
JD	6	8%	5	19%	5	15%	4	15%	20	12%
PINS	11	14%	6	22%	6	18%	0	0%	23	14%
Previous History										
Any Prior FC Placement (Lifetime)										
No	47	60%	17	63%	23	68%	19	73%	106	64%
Yes	31	40%	10	37%	11	32%	7	27%	59	36%
Any Prior CC experience (Lifetime)										
No	1	1%	0	0%	1	3%	2	8%	4	2%
Yes	77	99%	27	100%	33	97%	24	92%	161	98%
Facility Prior to Movement into Current CC										
Institution	50	64%	16	59%	17	50%	13	50%	96	58%
Group Residence	10	13%	2	7%	3	9%	2	8%	17	10%
Group Home	14	18%	7	26%	9	26%	3	12%	33	20%
AOBH	1	1%	0	0%	3	9%	2	8%	6	4%
ACS' Children Center	0	0%	0	0%	0	0%	0	0%	0	0%
Others ¹	3	4%	2	7%	2	6%	6	23%	13	8%
Length of Time in Foster Care										
< 1 Month	2	3%	2	7%	1	3%	3	12%	8	5%
1-3 Months	14	18%	6	22%	2	6%	4	15%	26	16%
4-6 Months	4	5%	4	15%	4	12%	3	12%	15	9%
7-9 Months	4	5%	2	7%	3	9%	2	8%	11	7%
10-12 Months	1	1%	2	7%	2	6%	2	8%	7	4%
13-15 Months	3	4%	0	0%	4	12%	0	0%	7	4%
16-18 Months	4	5%	2	7%	3	9%	2	8%	11	7%
19-21 Months	7	9%	0	0%	1	3%	0	0%	8	5%
22-24 Months	6	8%	0	0%	1	3%	2	8%	9	5%
25+ Months	33	42%	9	33%	13	38%	8	31%	63	38%
Length of Time in Previous Facility										
< 1 Month	9	12%	3	11%	4	12%	7	27%	23	14%
1-3 Months	26	33%	12	44%	9	26%	8	31%	55	33%
4-6 Months	12	15%	7	26%	7	21%	2	8%	28	17%
7-9 Months	8	10%	3	11%	5	15%	2	8%	18	11%
10-12 Months	4	5%	0	0%	5	15%	1	4%	10	6%
13-15 Months	5	6%	0	0%	0	0%	0	0%	5	3%
16-18 Months	5	6%	0	0%	1	3%	2	8%	8	5%
19-21 Months	2	3%	0	0%	0	0%	2	8%	4	2%
22-24 Months	2	3%	1	4%	1	3%	0	0%	4	2%
25+ Months	5	6%	1	4%	2	6%	2	8%	10	6%
Outcome										
Time To Exit / Transfer in 12-Month Followup¹										
Exited within 30 Days	N/A	N/A	2	7%	0	0%	1	4%	3	3%
Exited between 30 and 60 Days	N/A	N/A	2	7%	8	24%	3	12%	13	15%
Exited between 61 and 365 Days	N/A	N/A	23	85%	26	76%	22	85%	71	82%
Exit Type										
Discharged from Custody										
Discharged to Permanency (Return to Parent, Relative , Adoption)	N/A	N/A	17	63%	N/A	N/A	N/A	N/A	N/A	N/A
Discharged to Adult Corrections/OCFS/Other JD Placement	N/A	N/A	2	7%	N/A	N/A	N/A	N/A	N/A	N/A
Other (e.g., Adulthood obtained, AWOL, Entered OMH Facility, etc.)	N/A	N/A	8	30%	N/A	N/A	N/A	N/A	N/A	N/A
Stepped down into lower level of care										
Certified Foster Home	N/A	N/A	N/A	N/A	6	18%	N/A	N/A	N/A	N/A
Approved Relative Foster Home	N/A	N/A	N/A	N/A	2	6%	N/A	N/A	N/A	N/A
Foster/Adoptive Home	N/A	N/A	N/A	N/A	4	12%	N/A	N/A	N/A	N/A
Missing Facility Information	N/A	N/A	N/A	N/A	0	0%	N/A	N/A	N/A	N/A
Trial Discharge	N/A	N/A	N/A	N/A	22	65%	N/A	N/A	N/A	N/A
Transferred to another CC facility / program										
Institution	N/A	N/A	N/A	N/A	N/A	N/A	5	19%	N/A	N/A
Group Residence	N/A	N/A	N/A	N/A	N/A	N/A	4	15%	N/A	N/A
Group Home	N/A	N/A	N/A	N/A	N/A	N/A	8	31%	N/A	N/A
AOBH	N/A	N/A	N/A	N/A	N/A	N/A	0	0%	N/A	N/A
Other ²	N/A	N/A	N/A	N/A	N/A	N/A	9	35%	N/A	N/A

Notes:

1. Percentage in the "Total" columns is calculated based on total number of exit/transfer, excluding children remained in CC facility/program.

2. Other may include: ACS' Children Center, Non-secure/Secure Detention Center, Psychiatric Center, Residential Treatment Facility, and Runaway Shelter.

Prepared by OCFS Bureau of Research, Evaluation, and Performance Analytics; Data extracted from CONNECTIONS on 3/3/2021

Supplemental Table 4. Returns to Congregate Care in 2019 by Status at 1 Year Post CC Entry--Albany Region

	Remained in CC Program		Discharged from Custody		Stepped Down to Lower Level of Care		Transferred to Another CC Facility/Program		Total	
	#	%	#	%	#	%	#	%	#	%
Total¹	14	41%	9	26%	9	26%	2	6%	34	100%
Demographics										
Gender										
Female	5	36%	4	44%	3	33%	1	50%	13	38%
Male	9	64%	5	56%	6	67%	1	50%	21	62%
Race/Ethnicity										
White/Caucasian	7	50%	1	11%	0	0%	0	0%	8	24%
Black/African American	5	36%	4	44%	5	56%	1	50%	15	44%
Hispanic/Latino	0	0%	1	11%	0	0%	0	0%	1	3%
Other	0	0%	0	0%	0	0%	0	0%	0	0%
Unknown	2	14%	3	33%	4	44%	1	50%	10	29%
Age at Return to CC										
< 2	0	0%	0	0%	0	0%	0	0%	0	0%
2 - 5	0	0%	0	0%	0	0%	0	0%	0	0%
6 - 9	0	0%	0	0%	0	0%	0	0%	0	0%
10 - 12	0	0%	0	0%	0	0%	0	0%	0	0%
13	2	14%	0	0%	0	0%	0	0%	2	6%
14	2	14%	1	11%	2	22%	0	0%	5	15%
15	2	14%	5	56%	1	11%	0	0%	8	24%
16	5	36%	2	22%	2	22%	1	50%	10	29%
17+	3	21%	1	11%	4	44%	1	50%	9	26%
Current Movement into CC										
Facility upon Entry into CC										
Institution	7	50%	9	100%	8	89%	1	50%	25	74%
Group Residence	0	0%	0	0%	0	0%	0	0%	0	0%
Group Home	6	43%	0	0%	1	11%	1	50%	8	24%
AOBH	1	7%	0	0%	0	0%	0	0%	1	3%
Case Type										
CW	9	64%	5	56%	6	67%	2	100%	22	65%
JD	2	14%	3	33%	1	11%	0	0%	6	18%
PINS	3	21%	1	11%	2	22%	0	0%	6	18%
Previous History										
Status prior to CC Entry										
Absence	13	93%	7	78%	7	78%	2	100%	29	85%
Trial Discharge	1	7%	2	22%	2	22%	0	0%	5	15%
Any Prior FC Placement (Lifetime)										
No	8	57%	9	100%	3	33%	1	50%	21	62%
Yes	6	43%	0	0%	6	67%	1	50%	13	38%
Any Prior CC experience (Lifetime)										
No	0	0%	0	0%	0	0%	0	0%	0	0%
Yes	14	100%	9	100%	9	100%	2	100%	34	100%
Length of Time in Foster Care										
< 1 Month	0	0%	0	0%	0	0%	0	0%	0	0%
1-3 Months	1	7%	2	22%	2	22%	0	0%	5	15%
4-6 Months	1	7%	1	11%	1	11%	0	0%	3	9%
7-9 Months	1	7%	0	0%	1	11%	0	0%	2	6%
10-12 Months	3	21%	1	11%	0	0%	0	0%	4	12%
13-15 Months	0	0%	0	0%	1	11%	0	0%	1	3%
16-18 Months	2	14%	3	33%	1	11%	0	0%	6	18%
19-21 Months	0	0%	0	0%	0	0%	0	0%	0	0%
22-24 Months	1	7%	0	0%	0	0%	0	0%	1	3%
25+ Months	5	36%	2	22%	3	33%	2	100%	12	35%
Length of Time in CC Facility prior to Absence / TD										
< 1 Month	5	36%	2	22%	1	11%	1	50%	9	26%
1-3 Months	4	29%	2	22%	5	56%	0	0%	11	32%
4-6 Months	3	21%	1	11%	2	22%	0	0%	6	18%
7-9 Months	1	7%	1	11%	1	11%	0	0%	3	9%
10-12 Months	1	7%	1	11%	0	0%	0	0%	2	6%
13-15 Months	0	0%	1	11%	0	0%	0	0%	1	3%
16-18 Months	0	0%	1	11%	0	0%	0	0%	1	3%
19-21 Months	0	0%	0	0%	0	0%	1	50%	1	3%
22-24 Months	0	0%	0	0%	0	0%	0	0%	0	0%
25+ Months	0	0%	0	0%	0	0%	0	0%	0	0%
Outcome										
Time To Exit / Transfer in 12-Month Followup²										
Exited within 30 Days	N/A	N/A	4	44%	4	44%	0	0%	8	40%
Exited between 30 and 60 Days	N/A	N/A	1	11%	1	11%	1	50%	3	15%
Exited between 61 and 365 Days	N/A	N/A	4	44%	4	44%	1	50%	9	45%
Exit Type										
Discharged from Custody										
Discharged to Permanency (Return to Parent, Relative, Adoption)	N/A	N/A	7	78%	N/A	N/A	N/A	N/A	N/A	N/A
Discharged to Adult Corrections/OCFS/Other JD Placement	N/A	N/A	2	22%	N/A	N/A	N/A	N/A	N/A	N/A
Other (e.g., Adulthood obtained, AWOL, Entered OMH Facility, etc.)	N/A	N/A	0	0%	N/A	N/A	N/A	N/A	N/A	N/A
Stepped down into lower level of care										
Certified Foster Home	N/A	N/A	N/A	N/A	2	22%	N/A	N/A	N/A	N/A
Approved Relative Foster Home	N/A	N/A	N/A	N/A	0	0%	N/A	N/A	N/A	N/A
Foster/Adoptive Home	N/A	N/A	N/A	N/A	2	22%	N/A	N/A	N/A	N/A
Missing Facility Information	N/A	N/A	N/A	N/A	0	0%	N/A	N/A	N/A	N/A
Trial Discharge	N/A	N/A	N/A	N/A	5	56%	N/A	N/A	N/A	N/A
Transferred to another CC facility / program										
Institution	N/A	N/A	N/A	N/A	N/A	N/A	1	50%	N/A	N/A
Group Residence	N/A	N/A	N/A	N/A	N/A	N/A	1	50%	N/A	N/A
Group Home	N/A	N/A	N/A	N/A	N/A	N/A	0	0%	N/A	N/A
AOBH	N/A	N/A	N/A	N/A	N/A	N/A	0	0%	N/A	N/A
Other ³	N/A	N/A	N/A	N/A	N/A	N/A	0	0%	N/A	N/A

Notes:
 1. This total number of returns includes children being absent or in trial discharge more than 14 days and returned to the same CC facility/program.
 2. Percentage in the "Total" columns is calculated based on total number of exit/transfer, excluding children remained in CC facility/program.
 3. Other may include: ACS' Children Center, Non-secure/Secure Detention Center, Psychiatric Center, Residential Treatment Facility, and Runaway Shelter.
 Prepared by OCFS Bureau of Research, Evaluation, and Performance Analytics; Data extracted from CONNECTIONS on 3/3/2021

Supplemental Table 5. Children Entered Congregate Care in 2019 and Stayed for 6 or 12 Consecutive Months--Albany Region

	Children Entered CC ≤ 12 and Stayed for 6 Consecutive Months		Children Entered CC ≥ 13 and Stayed for 12 Consecutive Months		Total	
	#	%	#	%	#	%
Total	76	34%	147	66%	223	100%
Demographics						
Gender						
Female	31	41%	56	38%	87	39%
Male	45	59%	91	62%	136	61%
Race/Ethnicity						
White/Caucasian	49	64%	74	50%	123	55%
Black/African American	15	20%	37	25%	52	23%
Hispanic/Latino	5	7%	17	12%	22	10%
Other	0	0%	2	1%	2	1%
Unknown	7	9%	17	12%	24	11%
Age at Entry into CC						
< 2	0	0%	0	0%	0	0%
2 - 5	6	8%	0	0%	6	3%
6 - 9	26	34%	0	0%	26	12%
10 - 12	44	58%	0	0%	44	20%
13	0	0%	19	13%	19	9%
14	0	0%	27	18%	27	12%
15	0	0%	28	19%	28	13%
16	0	0%	45	31%	45	20%
17+	0	0%	28	19%	28	13%
Current Movement into CC						
Facility upon Entry into CC						
Institution	43	57%	99	67%	142	64%
Group Residence	14	18%	4	3%	18	8%
Group Home	14	18%	37	25%	51	23%
AOBH	5	7%	7	5%	12	5%
Path of CC Entry						
New Admission	26	34%	47	32%	73	33%
Step Ups	27	36%	24	16%	51	23%
Lateral Transfers	23	30%	62	42%	85	38%
Return from Absence / TD ¹	0	0%	14	10%	14	6%
Case Type						
CW	67	88%	95	65%	162	73%
JD	2	3%	22	15%	24	11%
PINS	7	9%	30	20%	37	17%
Previous History						
Any Prior FC Placement (Lifetime)						
No	51	67%	97	66%	148	66%
Yes	25	33%	50	34%	75	34%
Any Prior CC experience (Lifetime)						
No	44	58%	54	37%	98	44%
Yes	32	42%	93	63%	125	56%

Notes:

1. This number includes children being absent or in trial discharge more than 14 days and returned to the same CC facility/program.

Prepared by OCFS Bureau of Research, Evaluation, and Performance Analytics; Data extracted from CONNECTIONS on 3/3/2021

Trend Table 1. New Admissions, Step-Ups, Lateral Transfers, and Returns from Absence/Trial Discharge to Congregate Care by Case Type from 2017 to 2020, Albany Region

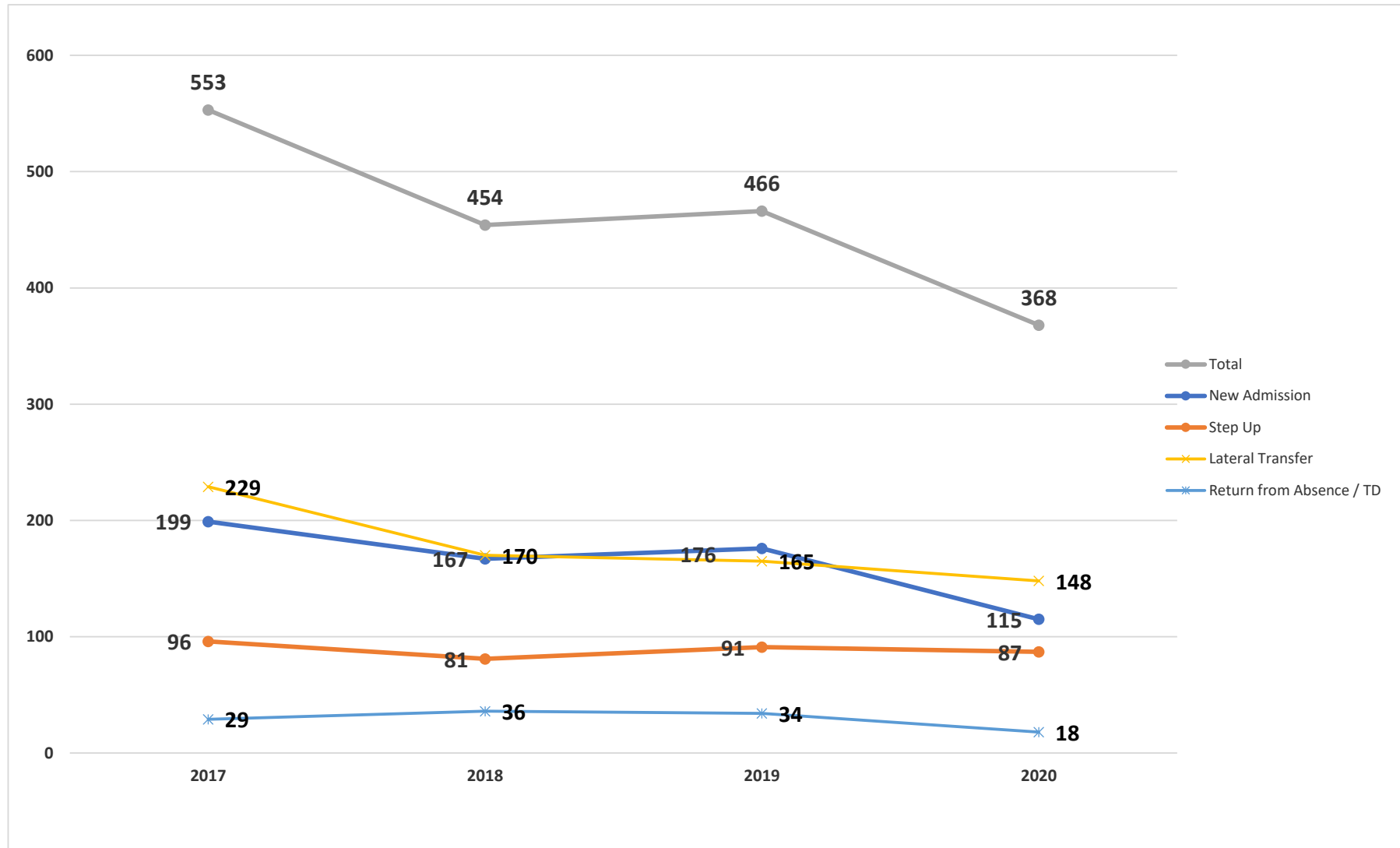
Years	Facility Type ¹	New Admissions				Step-Ups ²				Lateral Transfer ³				Return from Absence / TD ⁴				Total			
		CW	JD	PINS	Total	CW	JD	PINS	Total	CW	JD	PINS	Total	CW	JD	PINS	Total	CW	JD	PINS	Total
2017	Total	84	52	63	199	82	4	10	96	139	44	46	229	15	8	6	29	320	108	125	553
	Institution	56	50	56	162	38	2	4	44	83	34	38	155	11	8	6	25	188	94	104	386
	Group Residence	9	2	0	11	11	0	1	12	10	1	0	11	3	0	0	3	33	3	1	37
	Group Home	19	0	7	26	33	2	5	40	43	8	8	59	1	0	0	1	96	10	20	126
	Agency Boarding Home	0	0	0	0	0	0	0	0	3	1	0	4	0	0	0	0	3	1	0	4
2018	Total	72	56	39	167	74	2	5	81	112	33	25	170	18	7	11	36	276	98	80	454
	Institution	51	55	32	138	44	2	4	50	65	25	16	106	14	7	9	30	174	89	61	324
	Group Residence	6	0	1	7	15	0	0	15	5	2	0	7	0	0	0	0	26	2	1	29
	Group Home	13	0	5	18	14	0	1	15	38	5	8	51	3	0	1	4	68	5	15	88
	Agency Boarding Home	2	1	1	4	1	0	0	1	4	1	1	6	1	0	1	2	8	2	3	13
2019	Total	78	50	48	176	79	3	9	91	122	20	23	165	22	6	6	34	301	79	86	466
	Institution	44	45	37	126	45	2	8	55	60	12	15	87	15	6	4	25	164	65	64	293
	Group Residence	13	0	2	15	13	0	0	13	7	2	0	9	0	0	0	0	33	2	2	37
	Group Home	14	5	8	27	18	1	1	20	47	4	6	57	7	0	1	8	86	10	16	112
	Agency Boarding Home	7	0	1	8	3	0	0	3	8	2	2	12	0	0	1	1	18	2	4	24
2020	Total	76	36	3	115	81	6	0	87	117	29	2	148	11	7	0	18	285	78	5	368
	Institution	45	35	2	82	44	6	0	50	35	12	1	48	6	6	0	12	130	59	3	192
	Group Residence	8	0	0	8	5	0	0	5	30	3	0	33	1	0	0	1	44	3	0	47
	Group Home	16	1	1	18	28	0	0	28	42	11	1	54	4	1	0	5	90	13	2	105
	Agency Boarding Home	7	0	0	7	4	0	0	4	10	3	0	13	0	0	0	0	21	3	0	24

Note:

1. Numbers in this table exclude any movements into the ACS' Children's Center.
2. Step-Ups include youth moved from foster homes and adoption subsidy homes into congregate care facility.
3. Movements from ACS' Children Center to other CC facility / program are counted as lateral transfers; this category also includes youth moved from other facility (e.g., Runaway Shelter, Residential Treatment Facility, Detention, Voluntary Community Residence, Adoption Subsidy Home, etc.) into congregate care facility.
4. Only being absent or in trial discharge more than 14 days and returning to the same CC facility / program are included.

Prepared by OCFS Bureau of Research, Evaluation, and Performance Analytics; Data extracted from CONNECTIONS on 3/3/2021

Figure 1. Movements into Congregate Care between 2017 and 2020, Albany Region



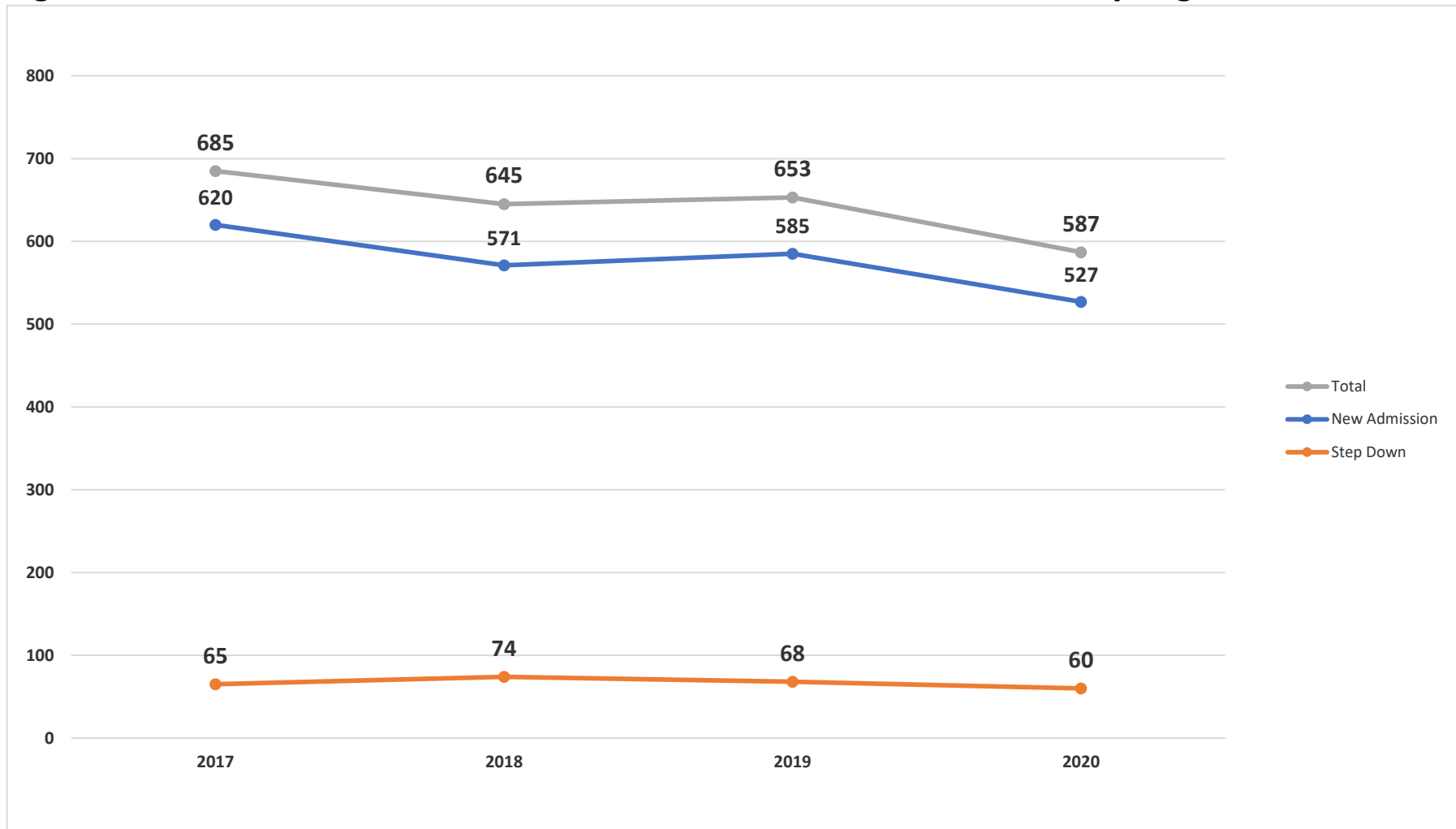
Prepared by OCFS Bureau of Research, Evaluation, and Performance Analytics; Data extracted from CONNECTIONS on 3/3/2021

Trend Table 2. New Admissions and Step-Downs into Foster Home by Case Type from 2017 to 2020, Albany Region

Years	Facility Type	New Admissions				Step-Downs				Total			
		CW	JD	PINS	Total	CW	JD	PINS	Total	CW	JD	PINS	Total
2017	Total	603	4	13	620	52	5	8	65	655	9	21	685
	Foster Boarding Home	506	3	13	522	48	5	7	60	554	8	20	582
	Approved Relative Home	97	1	0	98	4	0	1	5	101	1	1	103
2018	Total	564	1	6	571	69	3	2	74	633	4	8	645
	Foster Boarding Home	478	1	6	485	61	3	2	66	539	4	8	551
	Approved Relative Home	86	0	0	86	8	0	0	8	94	0	0	94
2019	Total	567	6	12	585	60	2	6	68	627	8	18	653
	Foster Boarding Home	433	6	12	451	49	2	6	57	482	8	18	508
	Approved Relative Home	134	0	0	134	11	0	0	11	145	0	0	145
2020	Total	521	5	1	527	54	4	2	60	575	9	3	587
	Foster Boarding Home	412	4	1	417	45	3	2	50	457	7	3	467
	Approved Relative Home	109	1	0	110	9	1	0	10	118	2	0	120

Prepared by OCFS Bureau of Research, Evaluation, and Performance Analytics; Data extracted from CONNECTIONS on 3/3/2021

Figure 2. Movements into Foster Homes between 2017 and 2020, Albany Region



Prepared by OCFS Bureau of Research, Evaluation, and Performance Analytics; Data extracted from CONNECTIONS on 3/3/2021